

NEXT BIOMETRICS – NB-3010-U WINDOWS 10 INSTALLATION GUIDE

VERSION: 1.1



CONTENTS

1	DEVICE INSTALLATION	3
2	ADDING FINGERPRINT TO YOUR WINDOWS ACCOUNT	5
3	USING FINGERPRINTS ON YOUR WINDOWS 10 DEVICE	8

LIST OF FIGURES

FIGURE 1-1: INSTALLING LATEST DEVICE DRIVERS FOR NB-3010-U MODULE	3
FIGURE 1-2: ADVANCED OPTIONS UNDER WU (WINDOWS UPDATE)	3
FIGURE 1-3: SELECT 'AUTOMATIC UPDATES'	4
FIGURE 1-4: OYSTER ENUMERATES AS NB-1010-U DEVICE	4
FIGURE 2-1: ACCESSING PC SETTINGS ON WIN 10 PLATFORM	5
FIGURE 2-2: ACCESSING ACCOUNTS FROM SETTINGS	6
FIGURE 2-3: ADDING FINGERPRINTS AS A SIGN-IN OPTION	6
FIGURE 2-4: ENTER ACCOUNT DETAILS TO VERIFY FINGERPRINT	7
FIGURE 2-5: COMPLETE FINGERPRINT ENROLMENT	7

1 DEVICE INSTALLATION

Plug the NB-3010-U Oyster reader to a USB port and let the system install the latest Windows driver automatically from Windows Update (WU) Service.

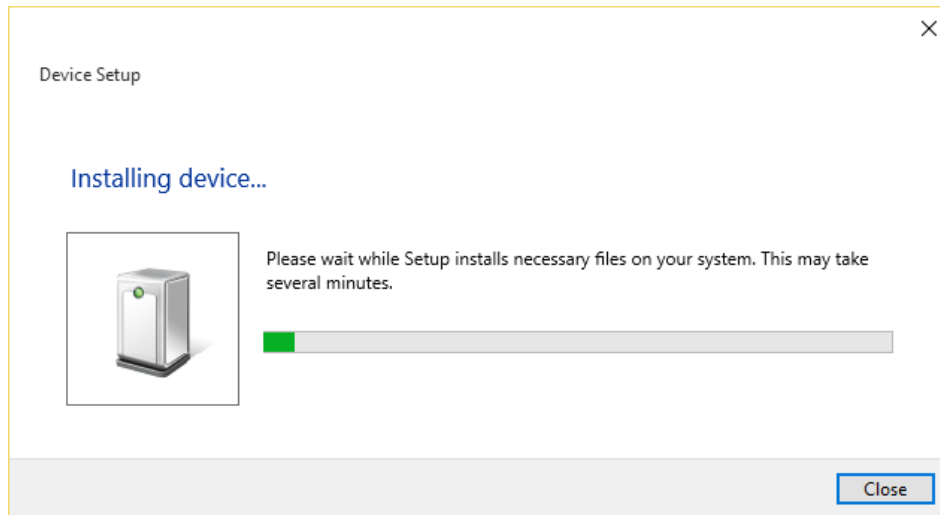


Figure 1-1: Installing Latest Device Drivers for NB-3010-U module

Note: Ensure that your PC is configured to install updates automatically through Windows Update. To do this, go to: [Settings\Update and Security\Windows Update\Advanced Options](#) and select the 'Automatic (recommended)' dropdown menu option available under 'Choose how updates are installed'.

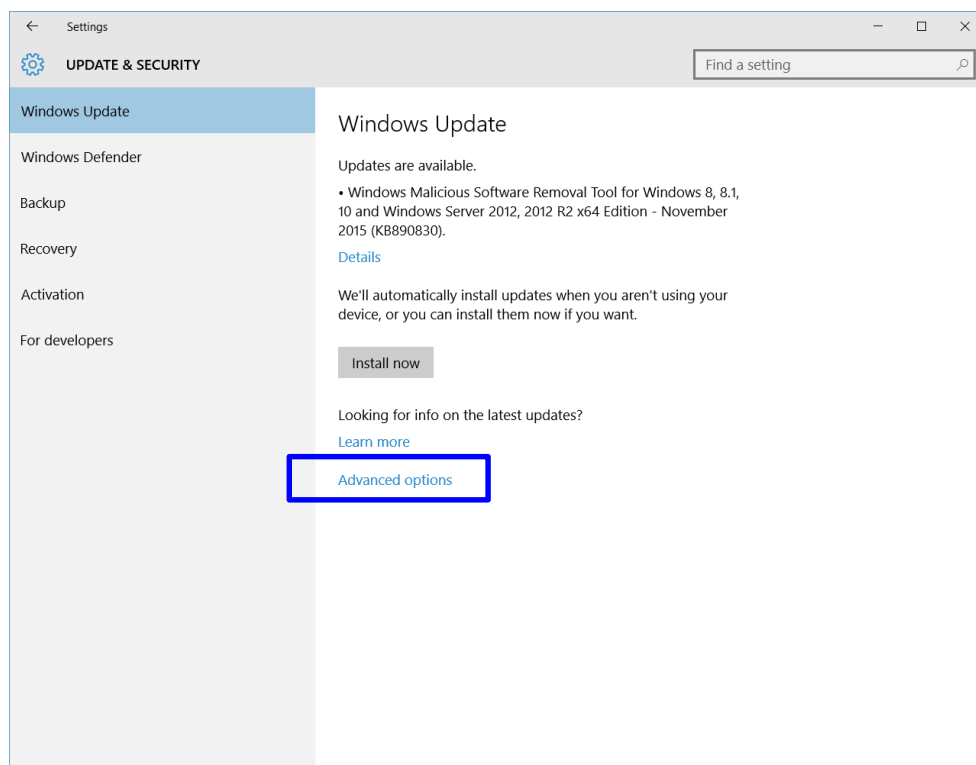


Figure 1-2: Advanced Options under WU (Windows Update)

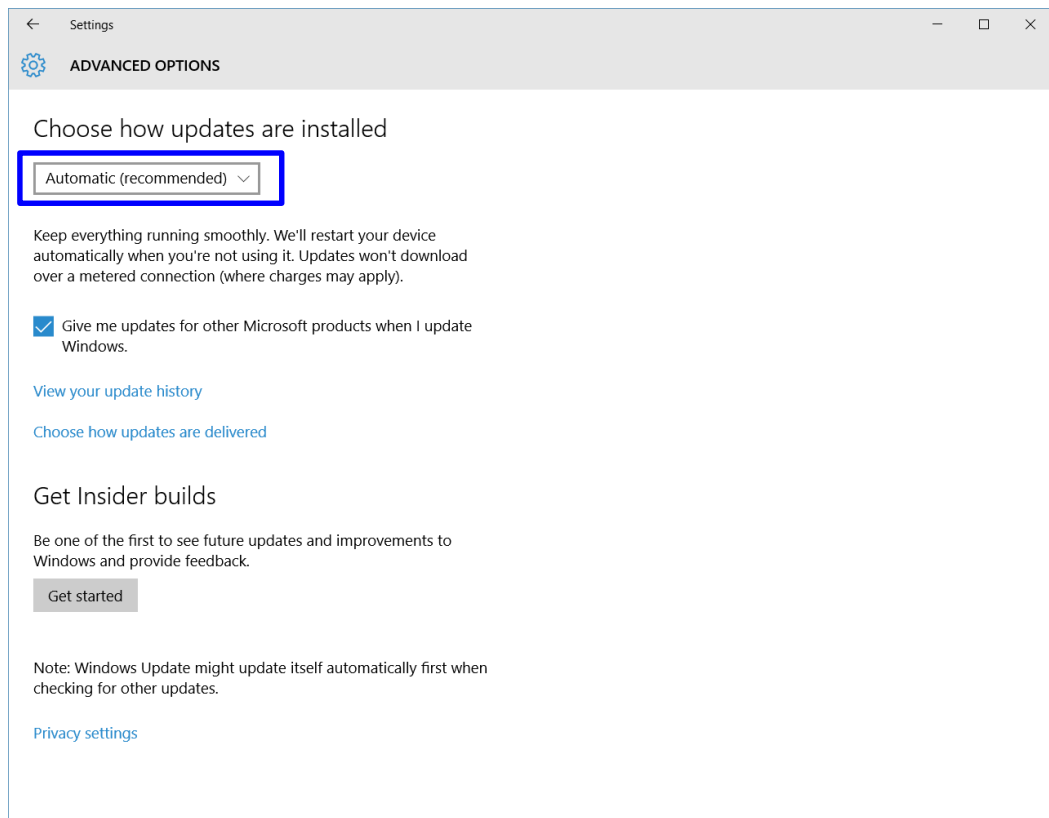


Figure 1-3: Select 'Automatic Updates'

Once the device is plugged into the computer, it should automatically detect the device and start installing the latest driver as shown

The Oyster is identified as NB-1010-U device.

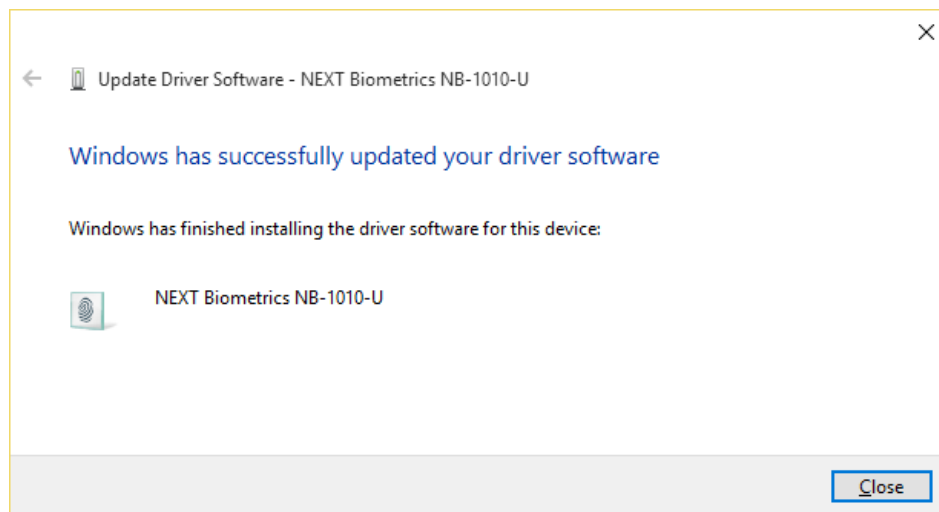


Figure 1-4: Oyster enumerates as NB-1010-U device

2 ADDING FINGERPRINT TO YOUR WINDOWS ACCOUNT

- 1) Select the Start button and then select **Settings**

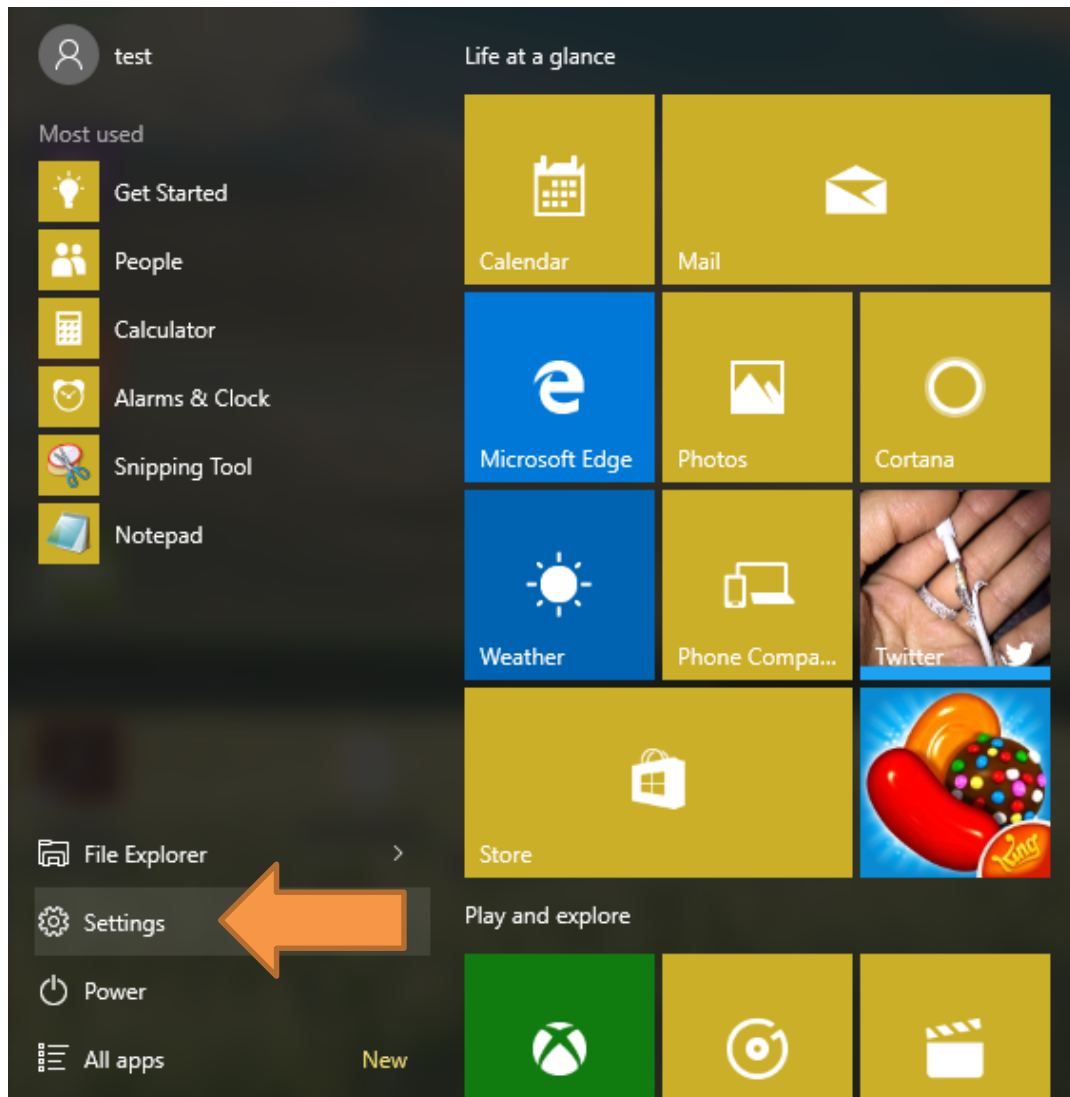


Figure 2-1: Accessing PC Settings on WIN 10 platform

2) On the Settings window, click/tap on **Accounts**

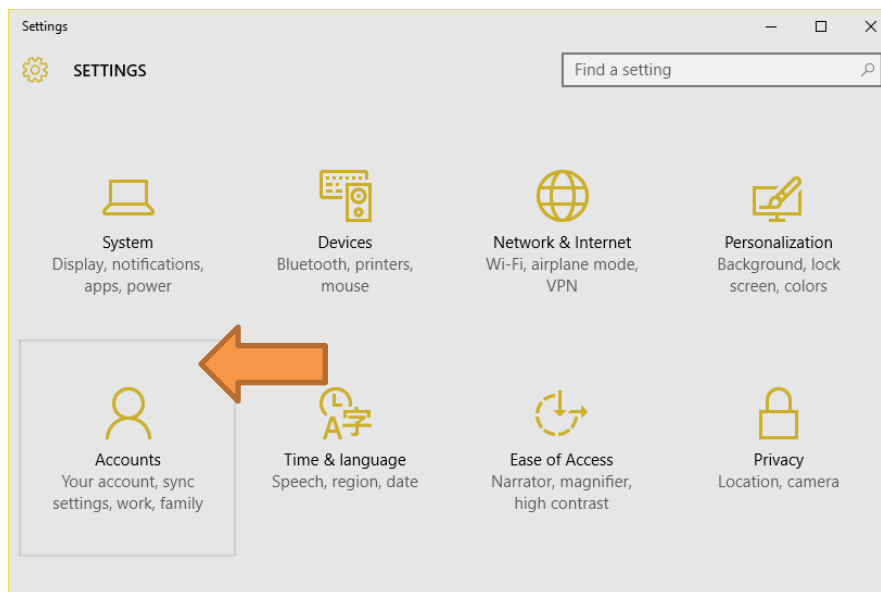


Figure 2-2: Accessing Accounts from Settings

3) On the left side of the Accounts window, click/tap on **Sign-in options**

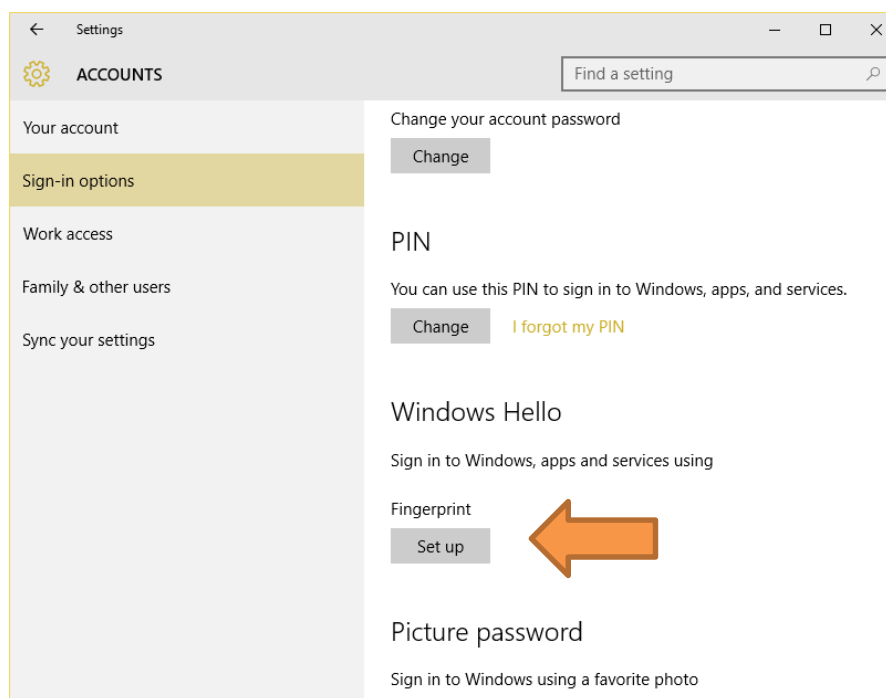


Figure 2-3: Adding Fingerprints as a sign-in option

On the right side under **Windows Hello**, click/tap on **Setup** (first finger). Once you've setup the first finger, this option changes to **Add another** (after first time). Click on this new option to add a new finger

- 4) Enter your PIN to verify, and click/tap on **OK**.

Note : If you already added a finger, then you could scan the registered finger on the fingerprint reader instead of entering your password.

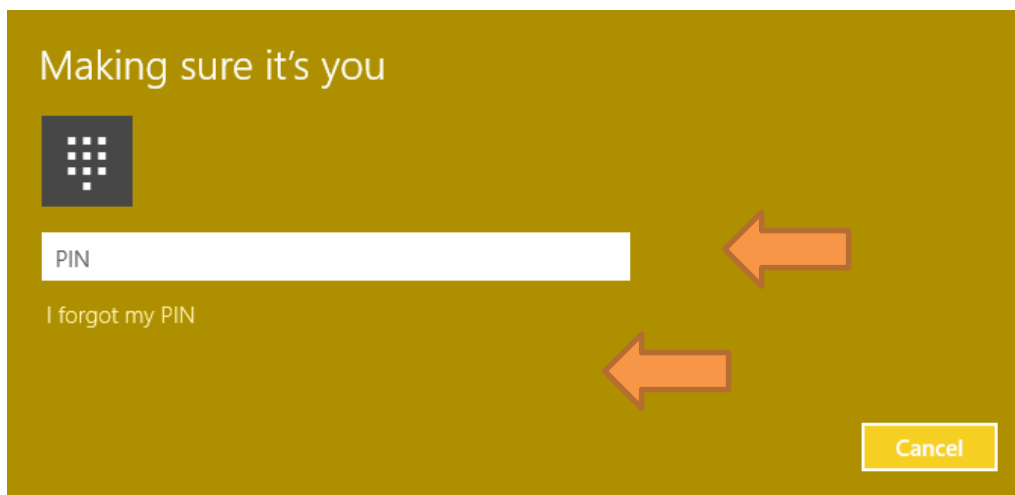


Figure 2-4: Enter account details to verify fingerprint

- 5) You will now need to **touch and hold a finger on the fingerprint reader** until the system finish scanning. This way, the system will learn your fingerprint.

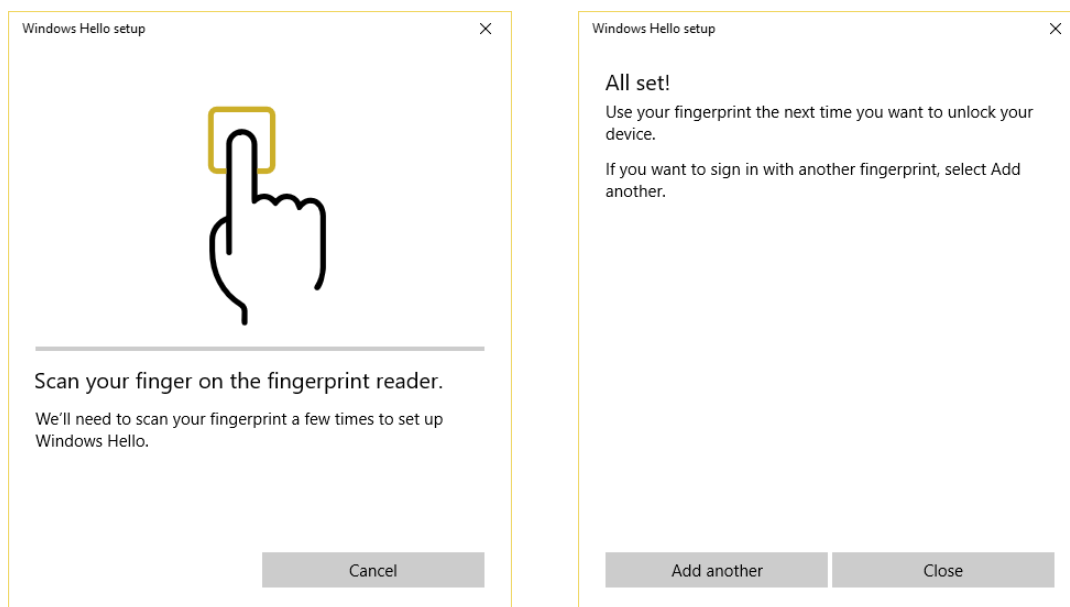


Figure 2-5: Complete Fingerprint Enrolment

3 USING FINGERPRINTS ON YOUR WINDOWS 10 DEVICE

Once the enrolment is complete in Step 2, you should be able to log-in to the system with the NB-3010-U fingerprint reader.

Your Windows 10 device can now also be unlocked with the simple touch of your enrolled finger.

DOCUMENT REVISION HISTORY

REVISION	CHANGE	DONE BY	DATE
1.0	Initial Release	Radim Smat	10/19/2015
1.1	<ul style="list-style-type: none">Added information on setting up PC to install Windows Updates automaticallyUpdated document formatting	Radim Smat, Jacob Tomy	11/19/2015