

# NEXT BIOMETRICS – NB-3010-U WINDOWS 7 INSTALLATION GUIDE

VERSION: 1.1



# CONTENTS

1	DEVICE INSTALLATION .....	3
2	ADDING FINGERPRINT FOR YOUR WINDOWS 7 ACCOUNT .....	5

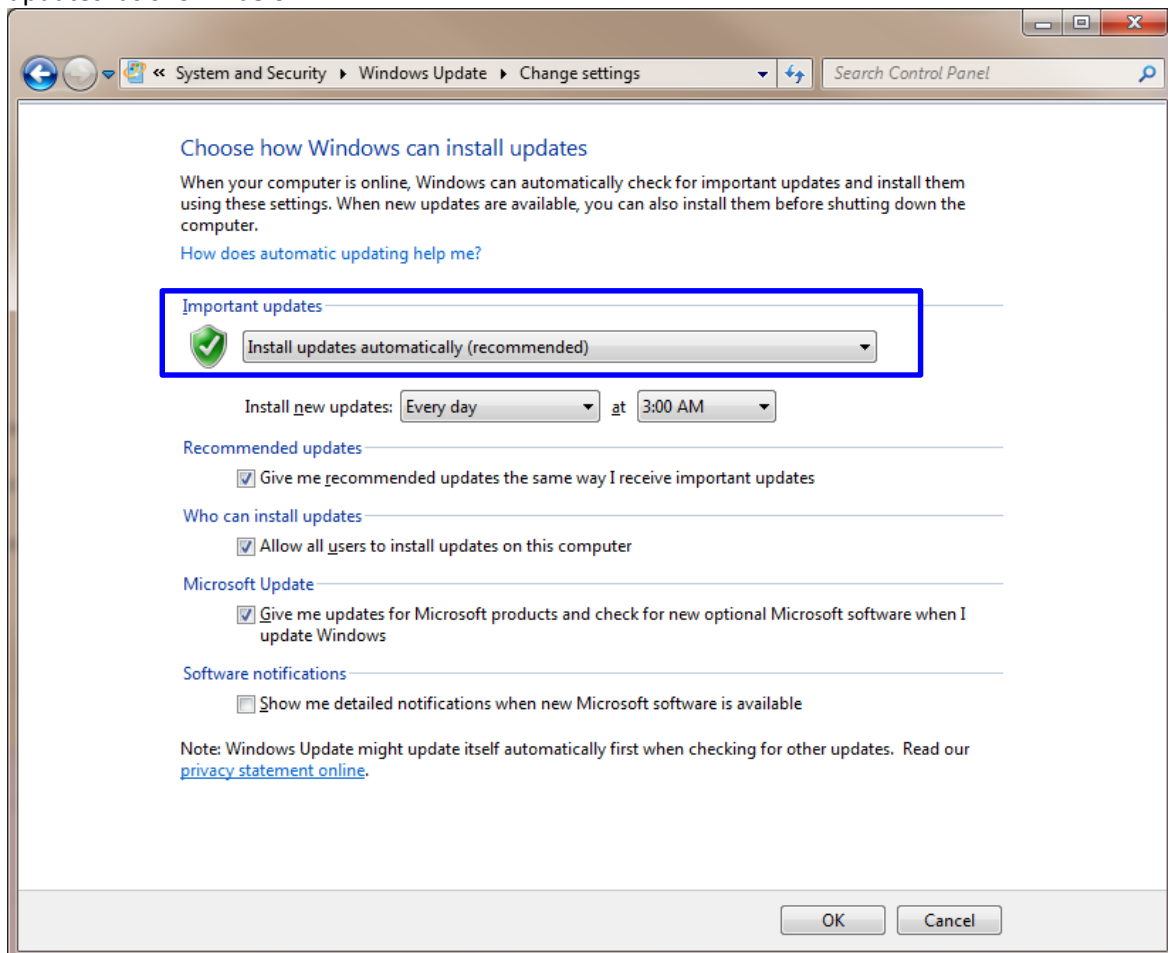
# LIST OF FIGURES

FIGURE 1-1: CONTROL PANEL SETTINGS FOR AUTOMATIC WU (WINDOWS UPDATE).....	3
FIGURE 1-2: INSTALLING LATEST DEVICE DRIVERS FOR NB-3010-U MODULE .....	3
FIGURE 1-3: NB-3010-U DRIVER INSTALLATION COMPLETE .....	4
FIGURE 2-1: ACCESSING BIOMETRICS DEVICES ON CONTROL PANEL.....	5
FIGURE 2-2: USING FINGERPRINTS WITH WINDOWS .....	5
FIGURE 2-3: BIOMETRIC DEVICE WELCOME MESSAGE.....	6
FIGURE 2-4: FINGER ENROLMENT SELECTION .....	6
FIGURE 2-5: FINGERPRINT MANAGEMENT SCREEN ON WINDOWS 7 .....	7

## 1 DEVICE INSTALLATION

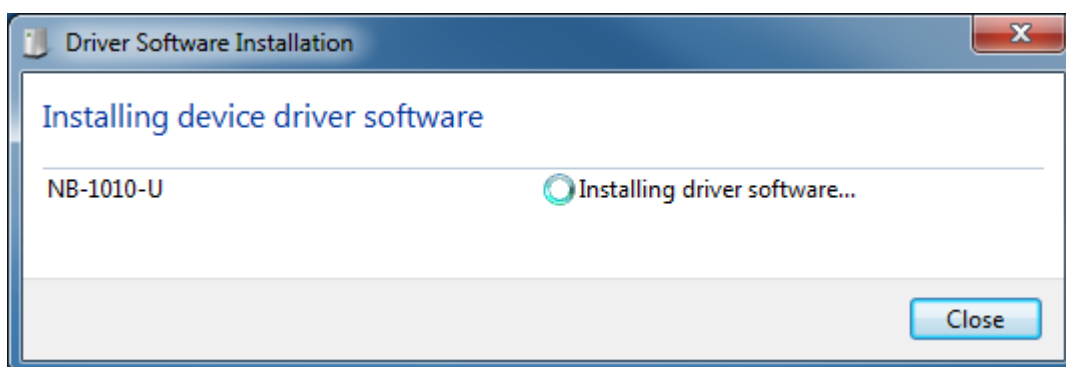
**Plug the NB-3010-U Oyster reader** to a USB port and let the system install the latest Windows driver automatically from Windows Update Service.

**Note:** Ensure that your PC is configured to install updates automatically through Windows Update. To do this, go to: [Control Panel\System and Security\Windows Update\Change settings](#) and select the 'Install updates automatically (recommended)' dropdown menu option available under 'Important updates' as shown below:



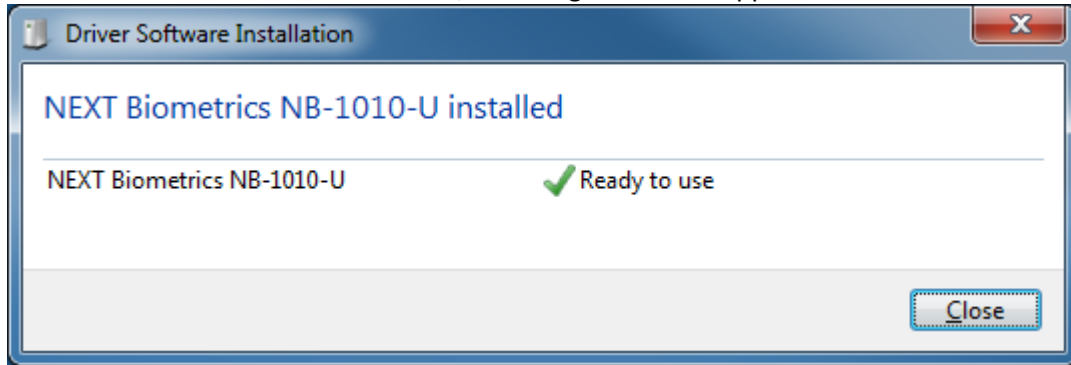
**Figure 1-1: Control Panel Settings for Automatic WU (Windows Update)**

Once the device is plugged into the computer, it should automatically detect the device and start installing the latest driver as shown:




**Figure 1-2: Installing Latest Device Drivers for NB-3010-U module**

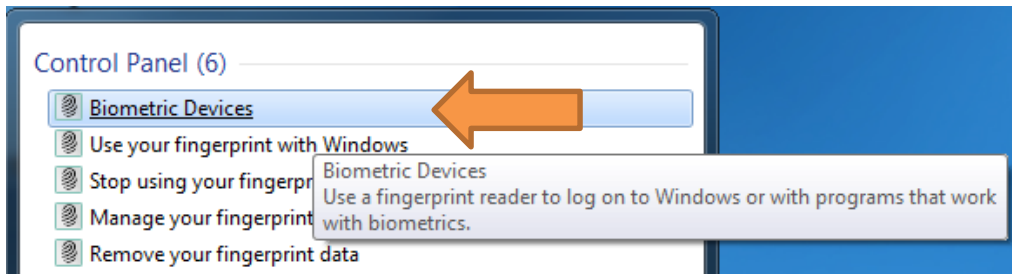
Once the driver installation is finished, following screen will appear.



**Figure 1-3: NB-3010-U Driver Installation Complete**

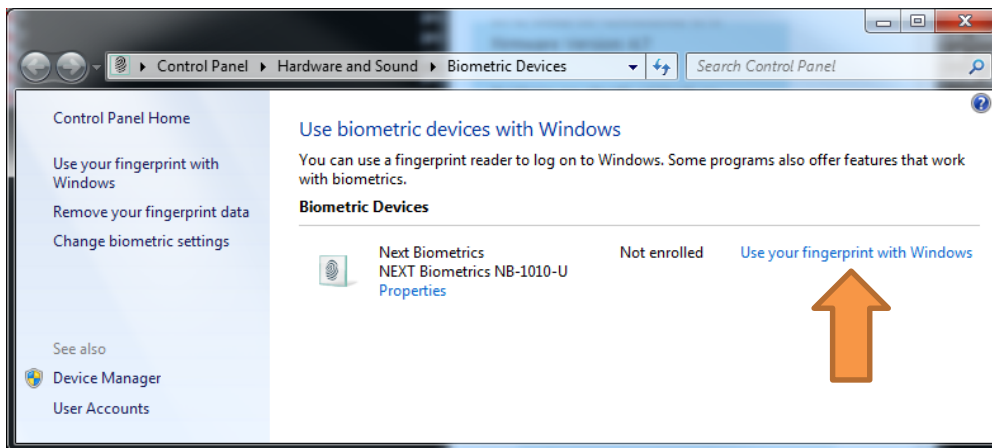
## 2 ADDING FINGERPRINT FOR YOUR WINDOWS 7 ACCOUNT

- 1) Open Biometric Devices by clicking the **Start** button , and then click **Control Panel**. In the search box, type **Biometrics**, and then click **Biometric Devices**.



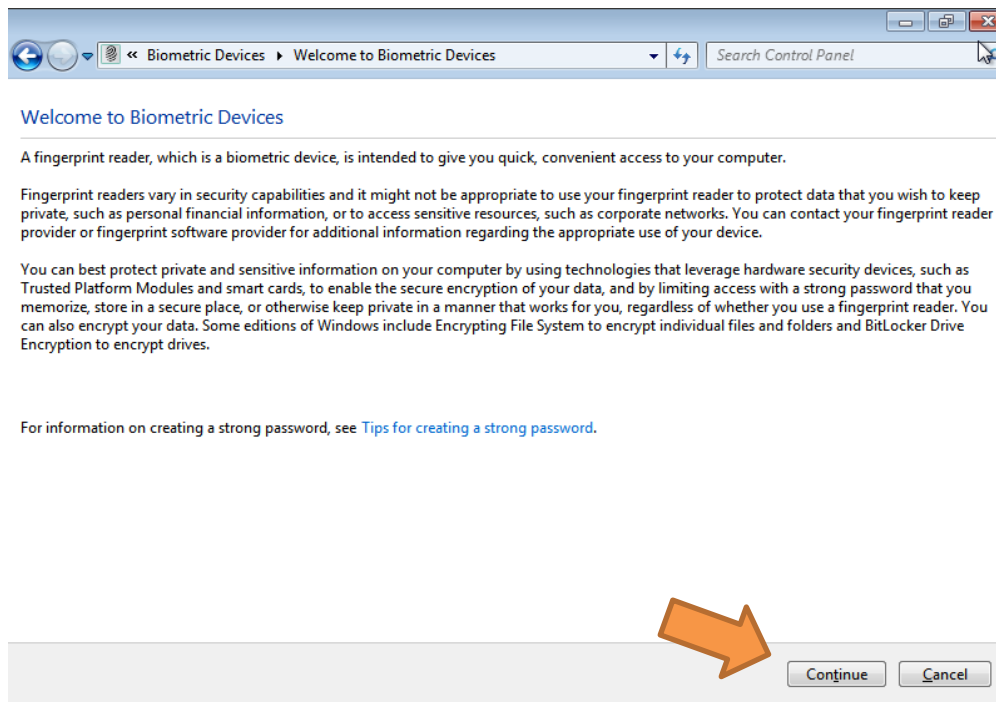
**Figure 2-1: Accessing Biometrics Devices on Control Panel**

- 2) On the right side of the **NEXT Biometrics NB-1010-U** row, click on **Use your fingerprint with Windows** or **Manage your fingerprint data** in case you have already enrolled a finger in the past.



**Figure 2-2: Using Fingerprints with Windows**

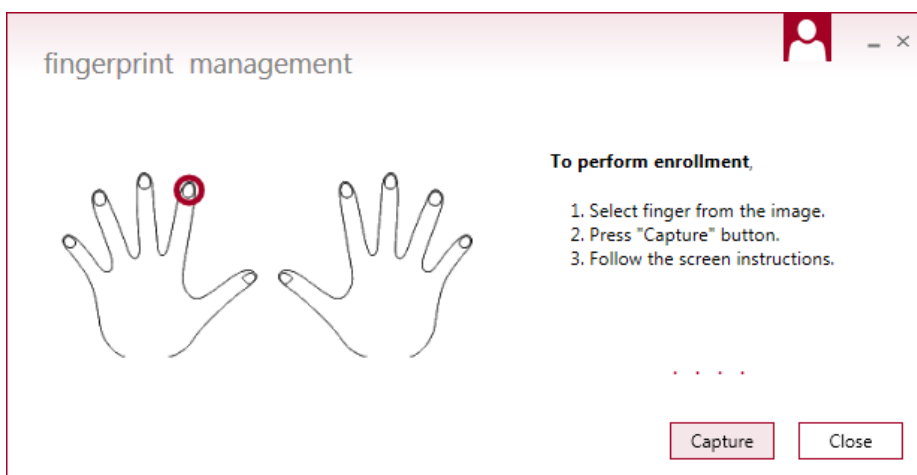
- 3) In **Welcome to Biometrics Devices** click continue



**Figure 2-3: Biometric Device Welcome Message**

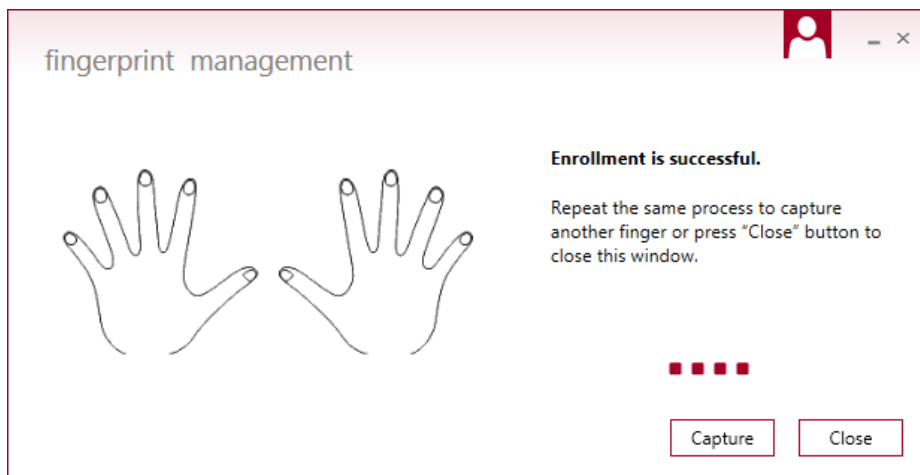
Ensure that your **Windows 7** is **up to date** and .NET Framework v4.0 is installed in your machine before you continue.

- 4) **Select a finger** to be enrolled and click Capture.



**Figure 2-4: Finger Enrolment Selection**

- 5) You will now need to touch the fingerprint reader several times as instructed. This way, the system will learn your fingerprint.



**Figure 2-5: Fingerprint Management Screen on Windows 7**

When finished, you can close fingerprint manager.

### **3 USING FINGERPRINT ON YOUR WINDOWS 7 DEVICE**

Once the enrolment is complete in Step 2, you should be able to log-in to the system with the NB-3010-U fingerprint reader.

Your Windows 7 device can now also be unlocked with the simple touch of your enrolled finger.



## DOCUMENT REVISION HISTORY

REVISION	CHANGE	DONE BY	DATE
1.0	Initial Release	Radim Smat	05/27/2015
1.1	<ul style="list-style-type: none"><li>Added information on setting up PC to install Windows Updates automatically</li><li>Updated document formatting</li></ul>	Radim Smat, Jacob Tomy	11/17/2015