



NEXT BIOMETRICS – NB-3023-U WINDOWS 7 INSTALLATION GUIDE

VERSION: 1.0



CONTENTS

1	DEVICE INSTALLATION	3
2	ADDING FINGERPRINT FOR YOUR WINDOWS 7 ACCOUNT.....	5
3	USING FINGERPRINT ON YOUR WINDOWS 7 DEVICE	8

LIST OF FIGURES

FIGURE 1-1: CONTROL PANEL SETTINGS FOR AUTOMATIC WU (WINDOWS UPDATE).....	3
FIGURE 1-2: INSTALLING LATEST DEVICE DRIVERS FOR NB-3023-U MODULE	3
FIGURE 1-3: NB-3023-U DRIVER INSTALLATION COMPLETE	4
FIGURE 2-1: ACCESSING BIOMETRICS DEVICES ON CONTROL PANEL	5
FIGURE 2-2: USING FINGERPRINTS WITH WINDOWS (SHOWING NB-1010-U, LOOK FOR NB-2020-U INSTEAD)	5
FIGURE 2-3: BIOMETRIC DEVICE WELCOME MESSAGE	6
FIGURE 2-4: FINGER ENROLMENT SELECTION.....	6
FIGURE 2-5: FINGERPRINT MANAGEMENT SCREEN ON WINDOWS 7	7

DOCUMENT REVISION HISTORY

REVISION	CHANGE	DONE BY	DATE
1.0	Initial Release	Saranya Kumar Jacob Tomy	11/23/2016

1 DEVICE INSTALLATION

Plug the NB-3023-U reader to a USB port and let the system install the latest Windows driver automatically from Windows Update Service.

Note: Ensure that your PC is configured to install updates automatically through Windows Update. To do this, go to: [Control Panel\System and Security\Windows Update\Change settings](#) and select the 'Install updates automatically (recommended)' dropdown menu option available under 'Important updates' as shown below:

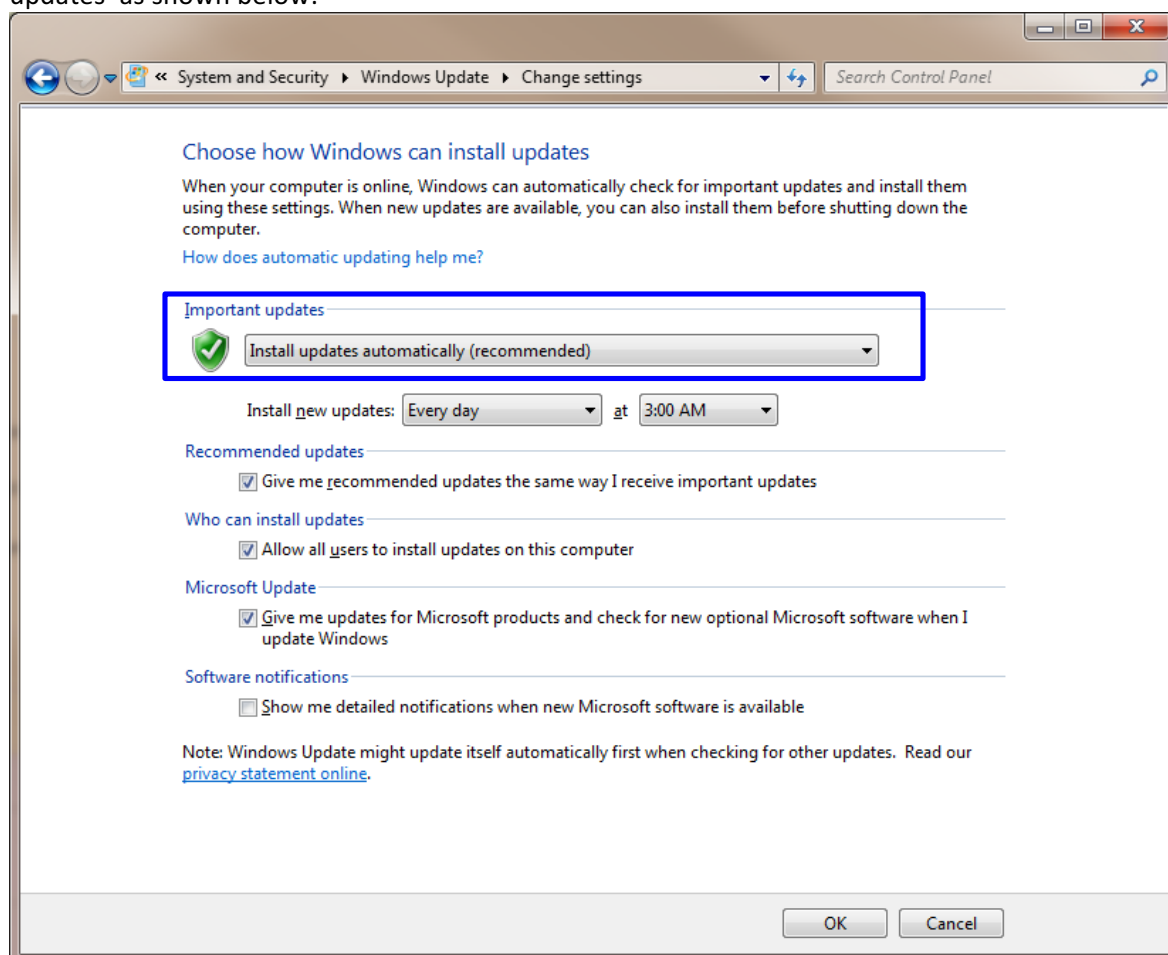


Figure 1-1: Control Panel Settings for Automatic WU (Windows Update)

Once the device is plugged into the computer, it should automatically detect the device as NB-2020-U and start installing the latest driver as shown:

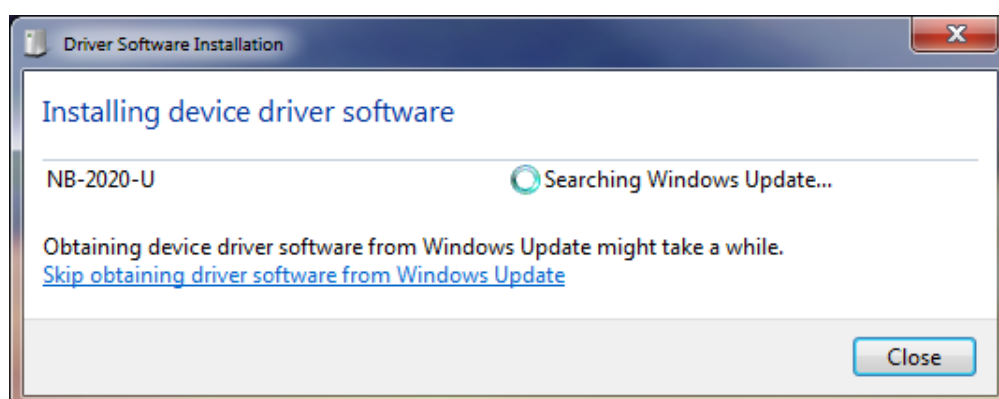


Figure 1-2: Installing Latest Device Drivers for NB-3023-U module

Once the driver installation is finished, following screen will appear.

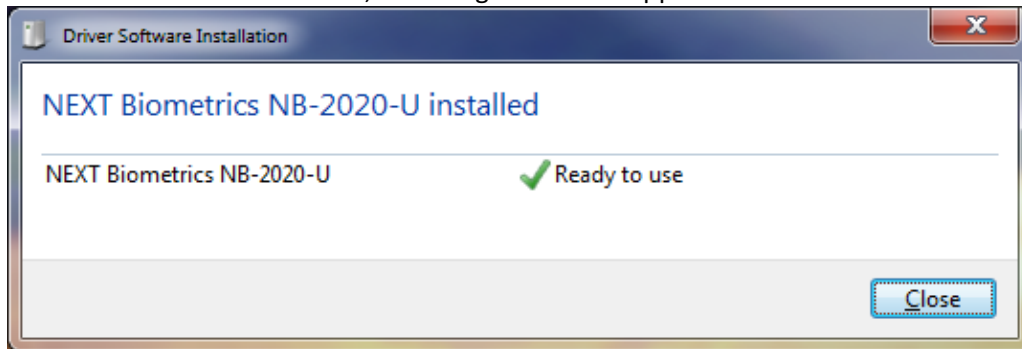



Figure 1-3: NB-3023-U Driver Installation Complete

2 ADDING FINGERPRINT FOR YOUR WINDOWS 7 ACCOUNT

- 1) Open Biometric Devices by clicking the **Start** button , and then click **Control Panel**. In the search box, type **Biometrics**, and then click **Biometric Devices**.

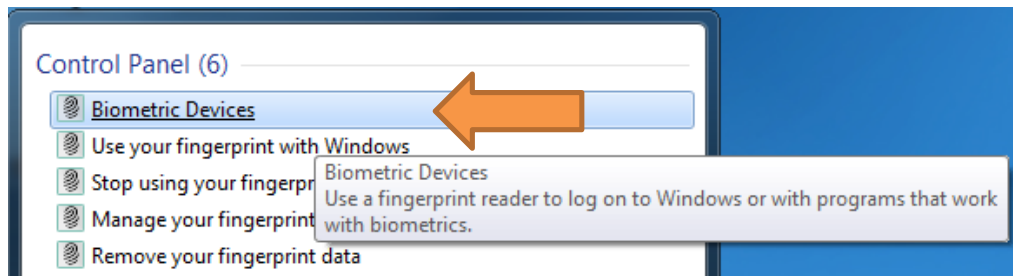


Figure 2-1: Accessing Biometrics Devices on Control Panel

- 2) On the right side of the **NEXT Biometrics NB-2020-U** row, click on **Use your fingerprint with Windows** or **Manage your fingerprint data** in case you have already enrolled a finger in the past.

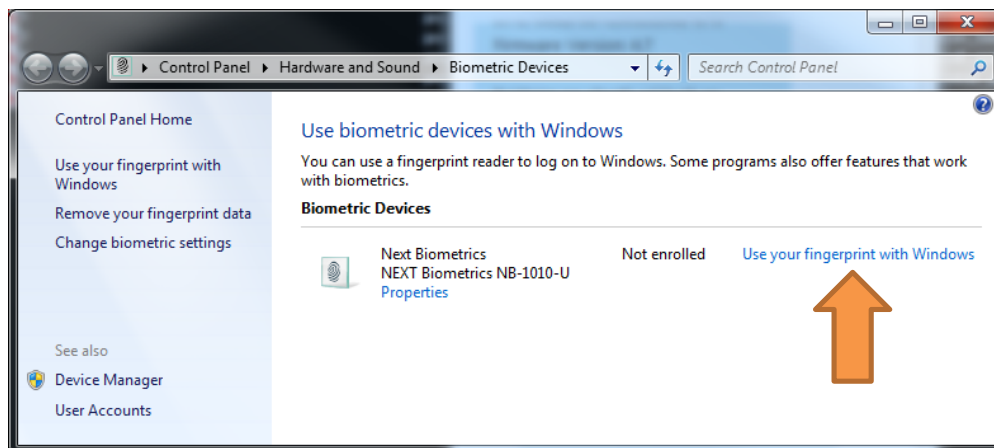


Figure 2-2: Using Fingerprints with Windows (showing NB-1010-U, look for NB-2020-U instead)

- 3) In **Welcome to Biometrics Devices** click continue

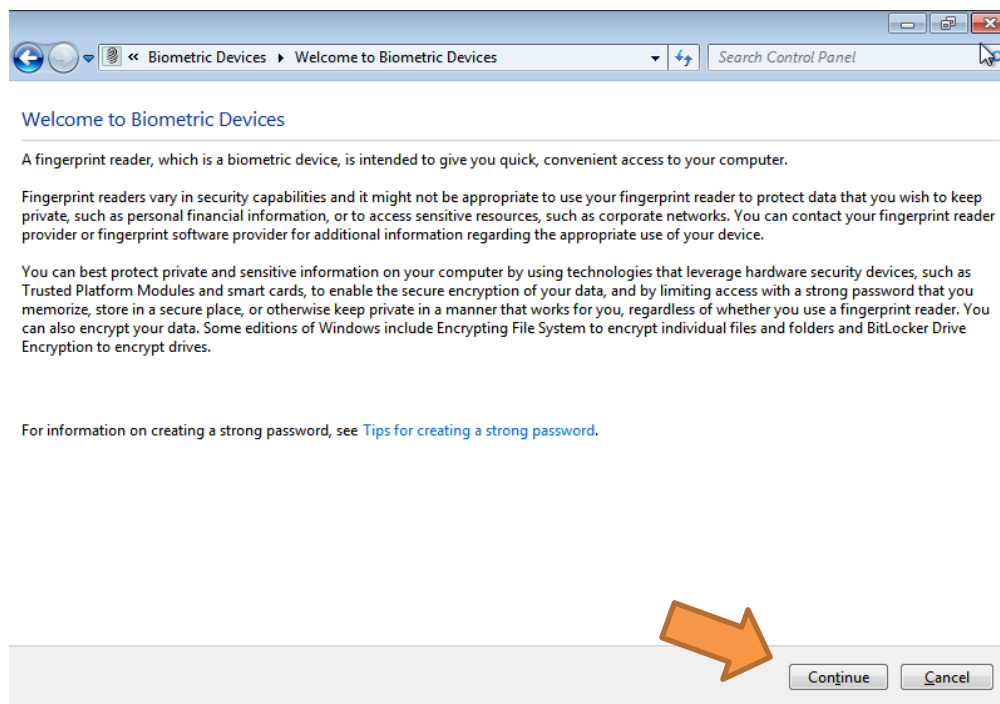


Figure 2-3: Biometric Device Welcome Message

Ensure that your **Windows 7** is up to date and .NET Framework v4.0 is installed in your machine before you continue.

- 4) **Select a finger** to be enrolled and click Capture.

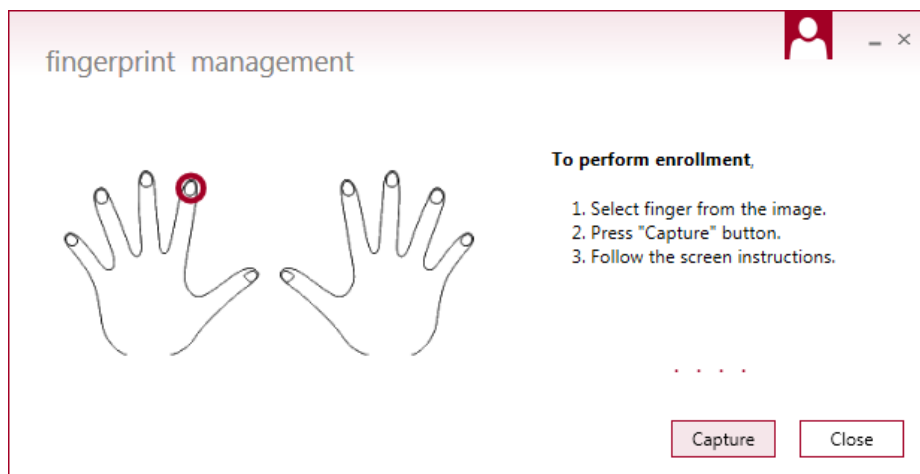


Figure 2-4: Finger Enrolment Selection

- 5) You will now need to touch the fingerprint reader several times as instructed. This way, the system will learn your fingerprint.

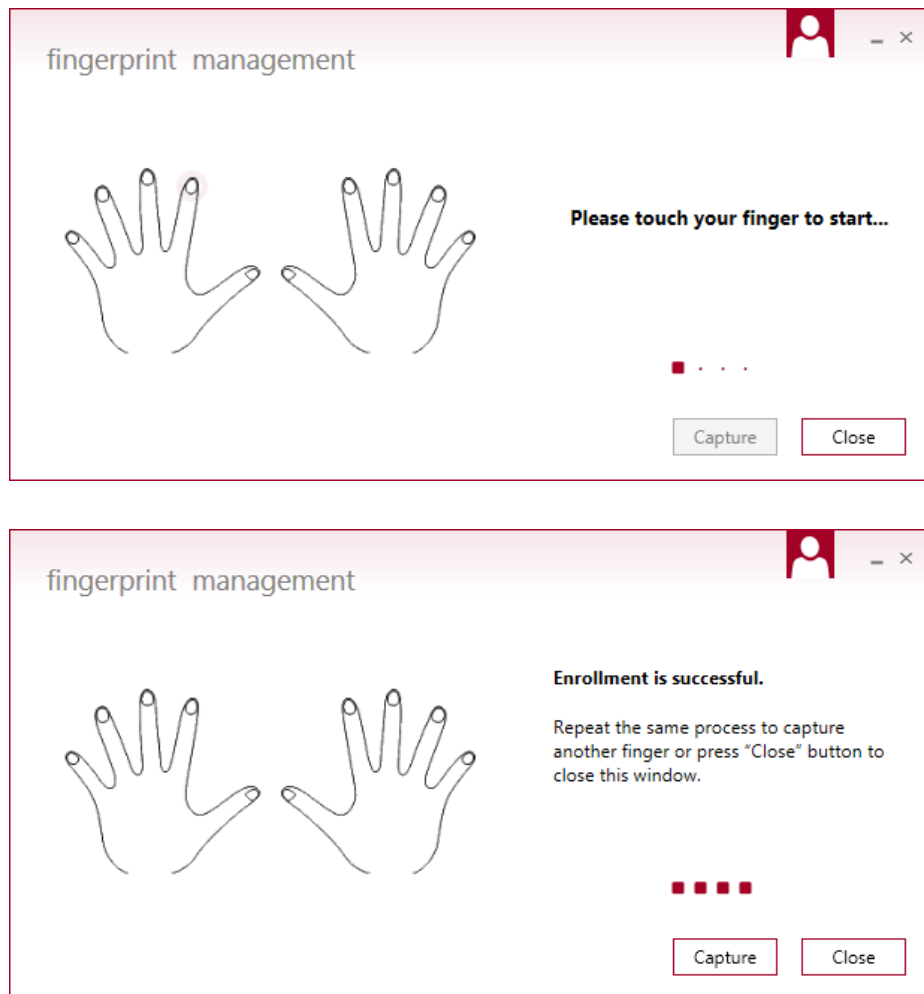


Figure 2-5: Fingerprint Management Screen on Windows 7

When finished, you can close fingerprint manager.

3 USING FINGERPRINT ON YOUR WINDOWS 7 DEVICE

Once the enrolment is complete (Step 2), you should be able to log-in to the system with the NB-3023-U fingerprint reader.

Your Windows 7 device can now also be unlocked with the simple touch of your enrolled finger.