

# NEXT BIOMETRICS – NB-3020-U2 WINDOWS 10 INSTALLATION GUIDE

VERSION: 1.0



# CONTENTS

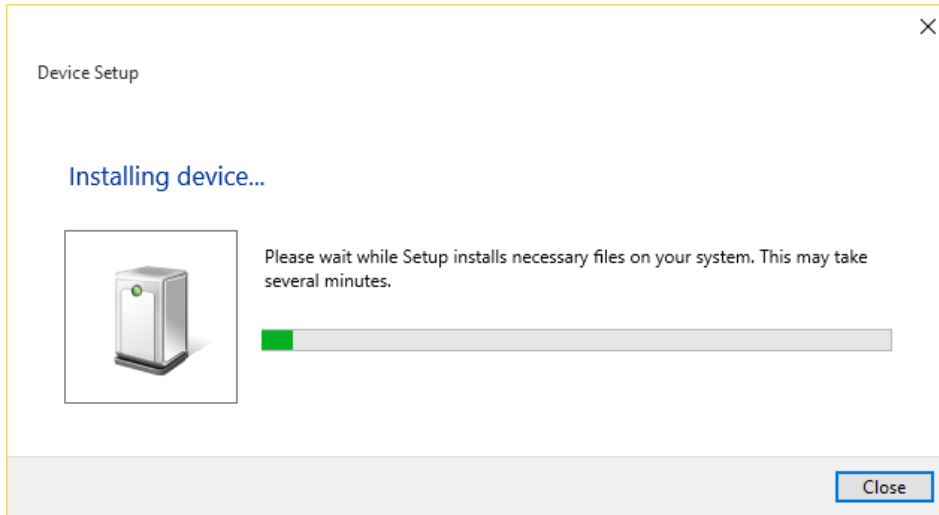
1	DEVICE INSTALLATION .....	3
2	ADDING FINGERPRINT TO YOUR WINDOWS ACCOUNT .....	5
3	USING FINGERPRINTS ON YOUR WINDOWS 10 DEVICE .....	8

# LIST OF FIGURES

FIGURE 1-1: INSTALLING LATEST DEVICE DRIVERS FOR NB-3020-U2 MODULE .....	3
FIGURE 1-2: ADVANCED OPTIONS UNDER WU (WINDOWS UPDATE) .....	3
FIGURE 1-3: SELECT 'AUTOMATIC UPDATES' .....	4
FIGURE 1-4: NB-3023-U2 ENUMERATES AS NB-2020-U DEVICE .....	4
FIGURE 2-1: ACCESSING PC SETTINGS ON WIN 10 PLATFORM .....	5
FIGURE 2-2: ACCESSING ACCOUNTS FROM SETTINGS .....	6
FIGURE 2-3: ADDING FINGERPRINTS AS A SIGN-IN OPTION .....	6
FIGURE 2-4: ENTER ACCOUNT DETAILS TO VERIFY FINGERPRINT .....	7
FIGURE 2-5: COMPLETE FINGERPRINT ENROLMENT .....	7

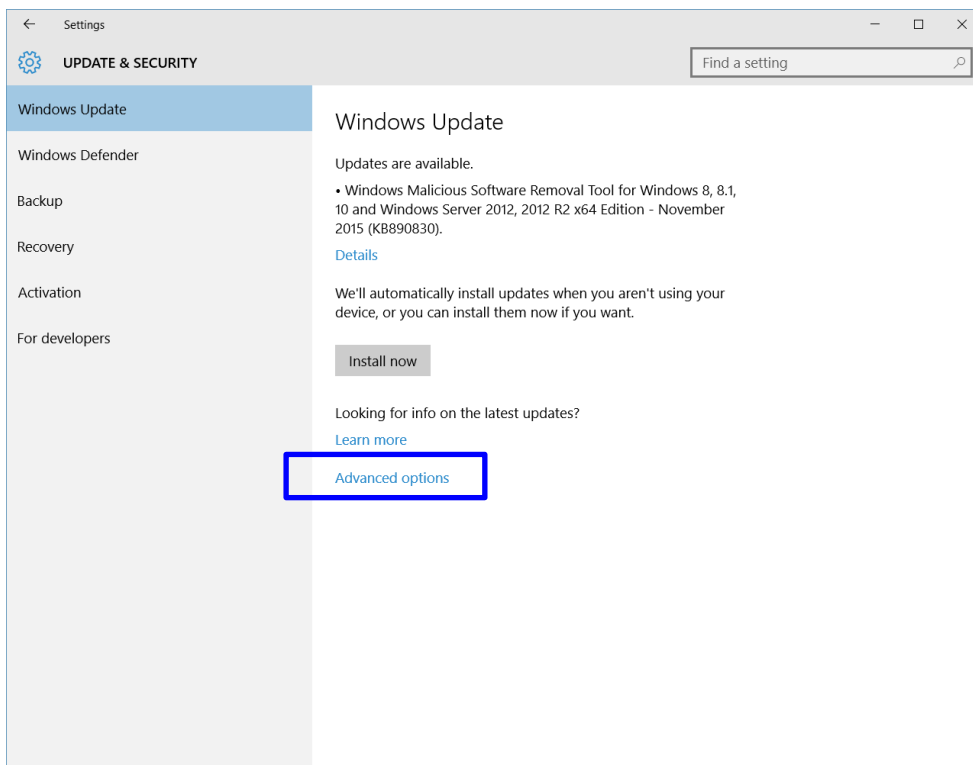
# 1 DEVICE INSTALLATION

**Plug the NB-3020-U2 Oyster reader** to a USB port and let the system install the latest Windows driver automatically from Windows Update (WU) Service. Driver download and installation may take several minutes.

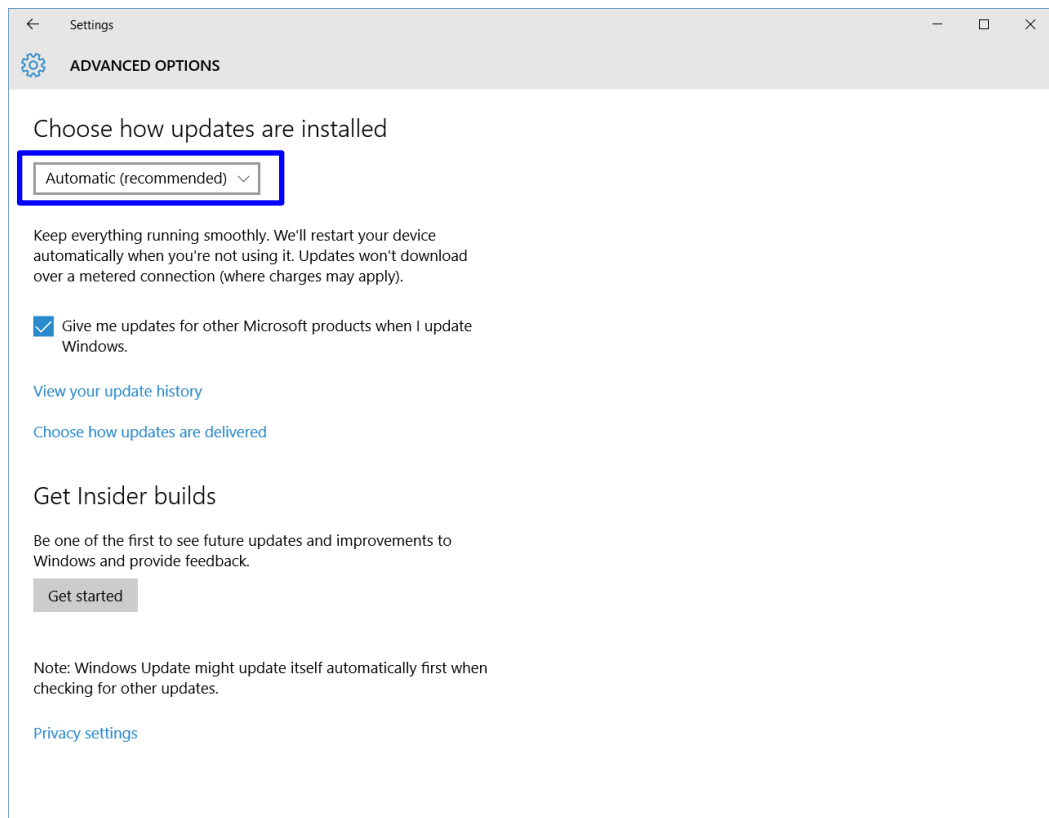


**Figure 1-1: Installing Latest Device Drivers for NB-3020-U2 module**

**Note:** Ensure that your PC is configured to install updates automatically through Windows Update. To do this, go to: [Settings\Update and Security\Windows Update\Advanced Options](#) and select the 'Automatic (recommended)' dropdown menu option available under 'Choose how updates are installed'.



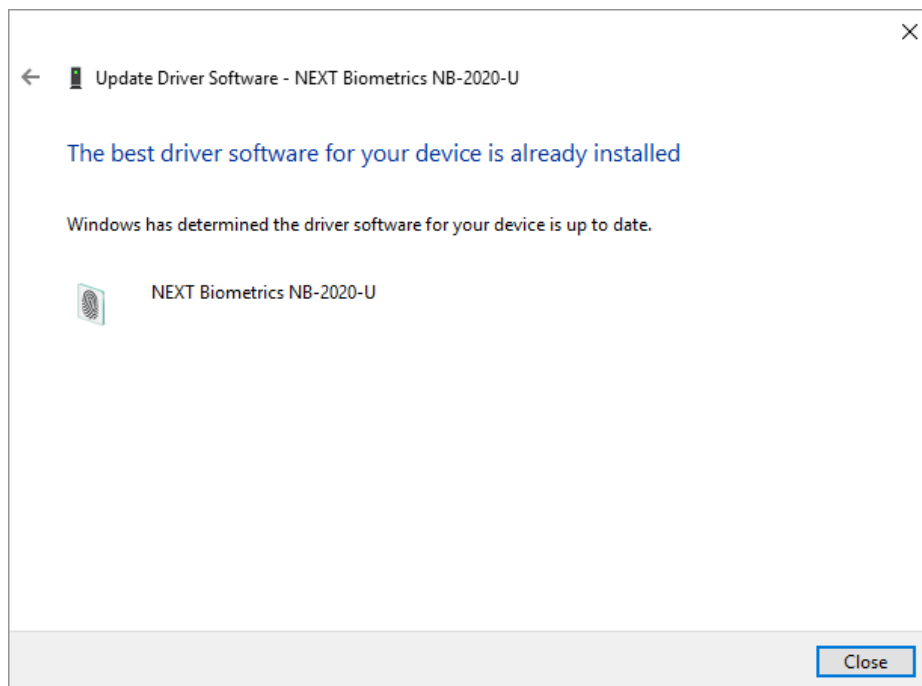
**Figure 1-2: Advanced Options under WU (Windows Update)**



**Figure 1-3: Select 'Automatic Updates'**

Once the device is plugged into the computer, it should automatically detect the device and start installing the latest driver as shown

NB-3023-U2 reader is enumerated as NB-2020-U device.



**Figure 1-4: NB-3023-U2 enumerates as NB-2020-U device**

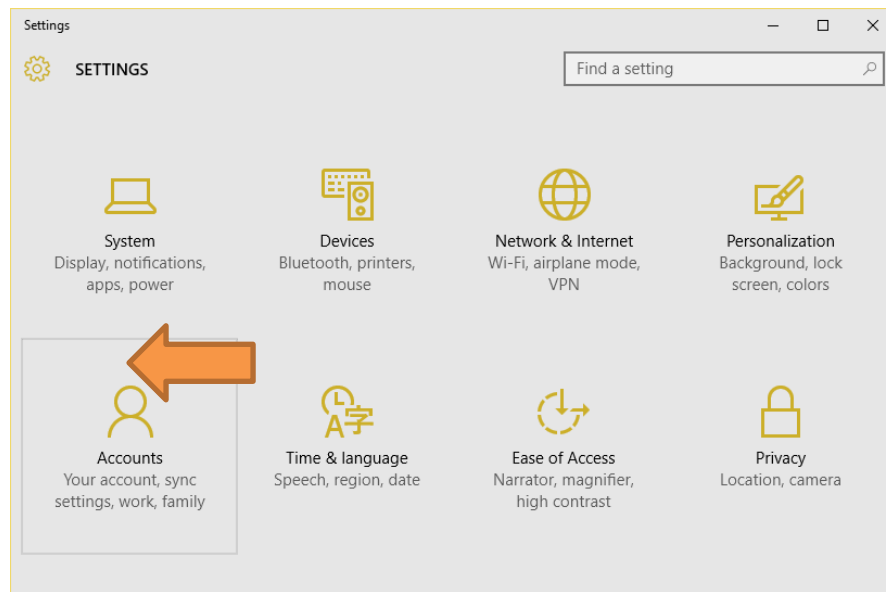
## 2 ADDING FINGERPRINT TO YOUR WINDOWS ACCOUNT

- 1) Select the Start button and then select **Settings**



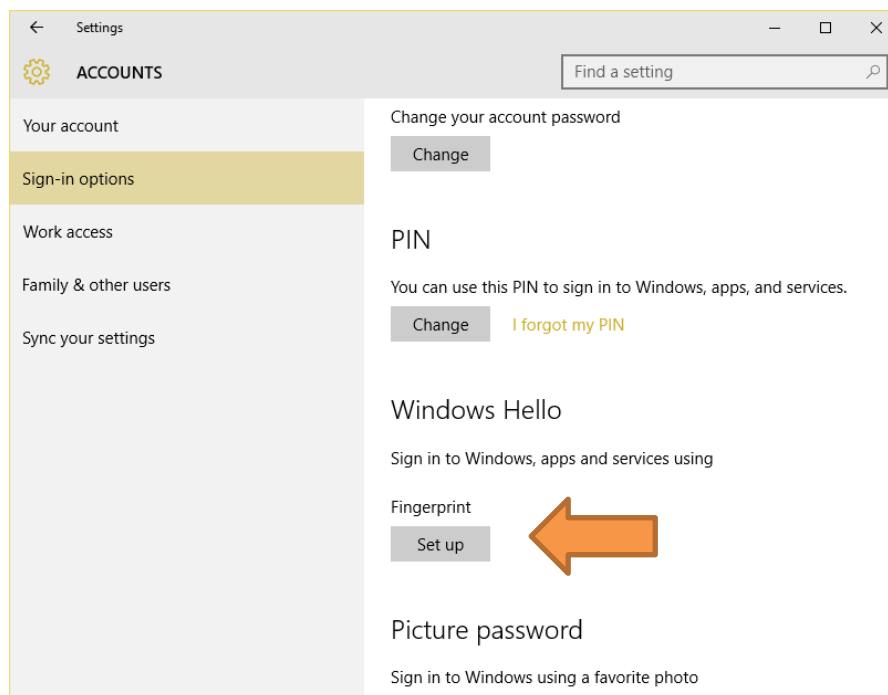
**Figure 2-1: Accessing PC Settings on WIN 10 platform**

- 2) On the Settings window, click/tap on **Accounts**



**Figure 0-1: Accessing Accounts from Settings**

3) On the left side of the Accounts window, click/tap on **Sign-in options**

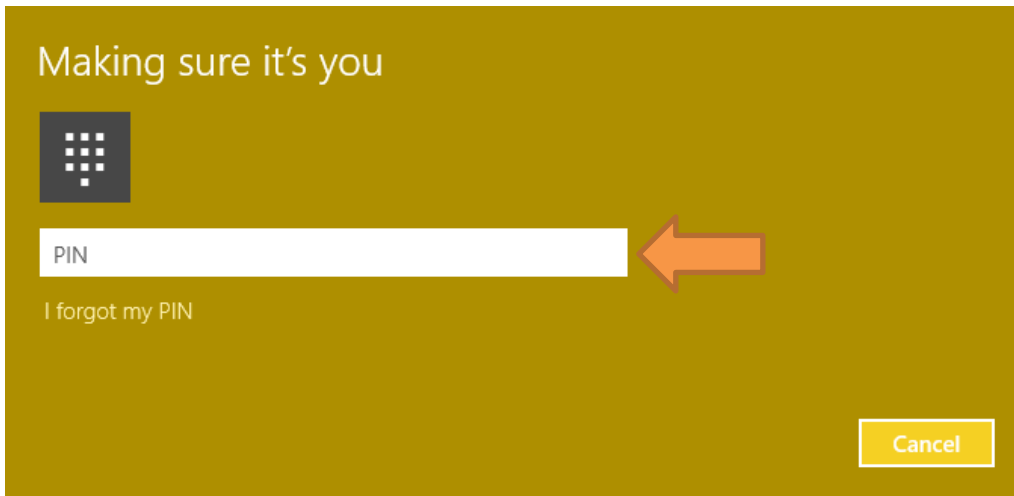


**Figure 0-2: Adding Fingerprints as a sign-in option**

On the right side under **Windows Hello**, click/tap on **Setup** (first finger). Once you’ve setup the first finger, this option changes to **Add another** (after first time). Click on this new option to add a new finger

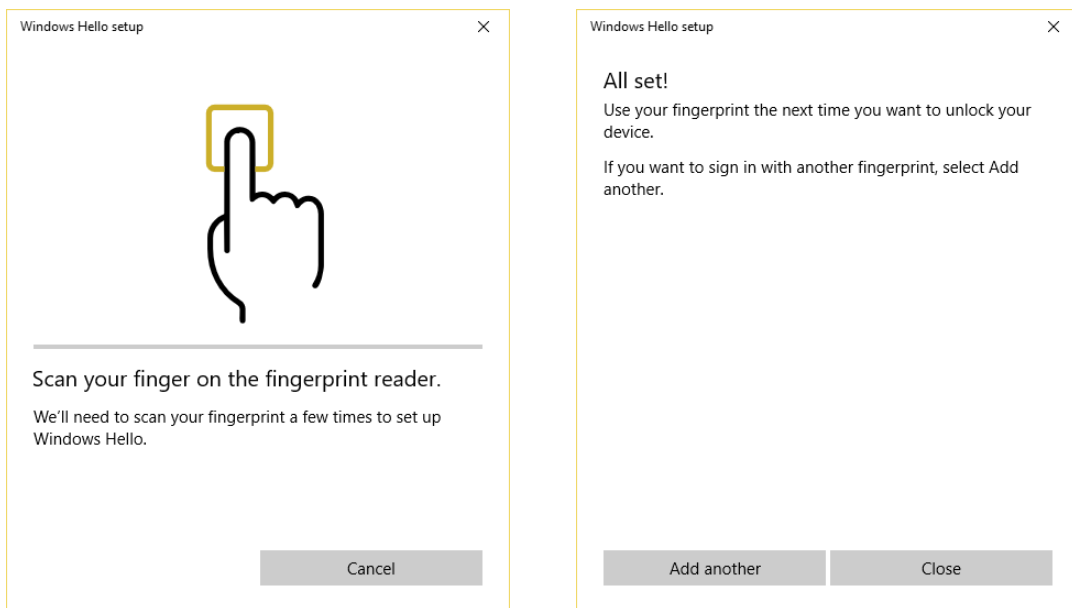
- 4) Enter your PIN to verify, and click/tap on **OK**.

**Note :** If you already added a finger, then you could scan the registered finger on the fingerprint reader instead of entering your password.



**Figure 0-3: Enter account details to verify fingerprint**

- 5) You will now need to **touch and hold a finger on the fingerprint reader** until the system finish scanning. This way, the system will learn your fingerprint.



**Figure 0-4: Complete Fingerprint Enrolment**

### **3 USING FINGERPRINTS ON YOUR WINDOWS 10 DEVICE**

**Once the enrolment is complete in Step 2, you should be able to log-in to the system with the NB-3020-U2 fingerprint reader.**

Your Windows 10 device can now also be unlocked with the simple touch of your enrolled finger.



# DOCUMENT REVISION HISTORY

REVISION	CHANGE	DONE BY	DATE
1.0	Initial Release	Radim Smat	11/20/2017